

Thanks for purchasing TEAM WAVE RB handheld ESC programmer designed for RB-series ESC (Electronics Speed Controller). Please read through this instruction manual before using it and consult our engineering supporting team if you have any question.

WARNING !

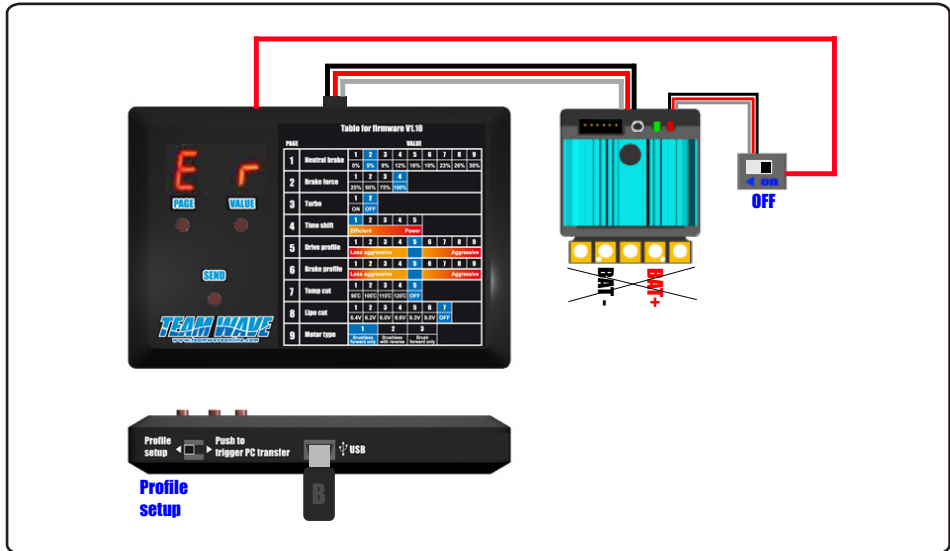
RB-handheld programmer is designed for TEAM WAVE RB-series brushless controller only, please do not use with other controllers. TEAM WAVE software and USB driver is needed if connecting the programmer to a personal computer.

CAUTION !

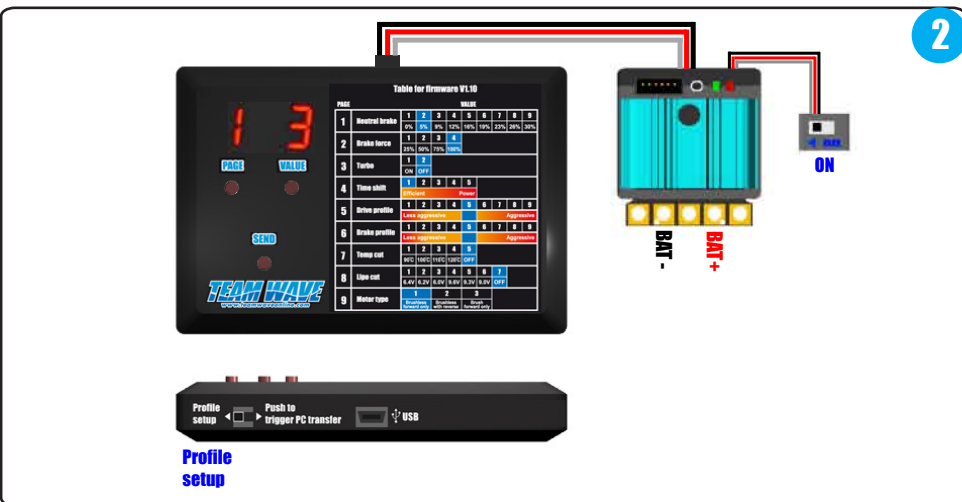
A USB type-A to USB type mini-B cable is needed (not provided) for connecting the programmer/ESC to the computer. Please switch off the ESC and remove the battery connected when connecting to the computer. Please remove the programmer from the computer if not in use.

Installation (Profile setup)

Profile setup become easier with the use of the handheld programmer. No more LED flash counting is needed. Connect the ESC and the handheld programmer as below for profile setup.



2

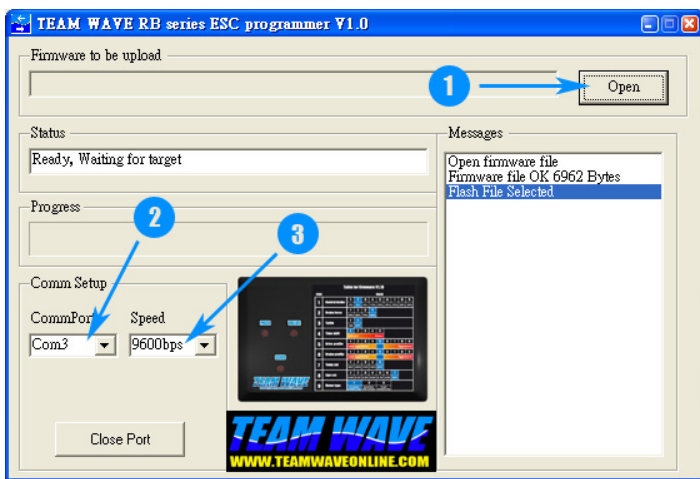


3

Connect the battery and switch on the ESC. Present profile parameters are displayed and can be changed using the "PAGE" and "VALUE" button. Press "SEND" button after all parameter setup, switch off the ESC and it is done.

5

Open the RB programmer application (downloadable from TEAM WAVE website, www.teamwaveonline.com) it should look like:

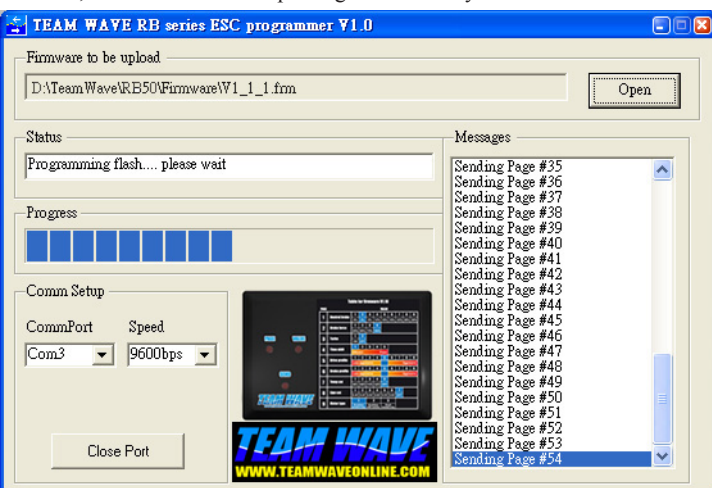


Step 1 : Press open and pick the desired firmware file

Step 2 : Select the correct com port (refer to Windows control panel -> Device manager)

Step 3 : Set speed to 9600bps

Step 4 : Push the switch on the handheld programmer from "profile setup" to "push to trigger PC transfer", firmware will start updating automatically as below.

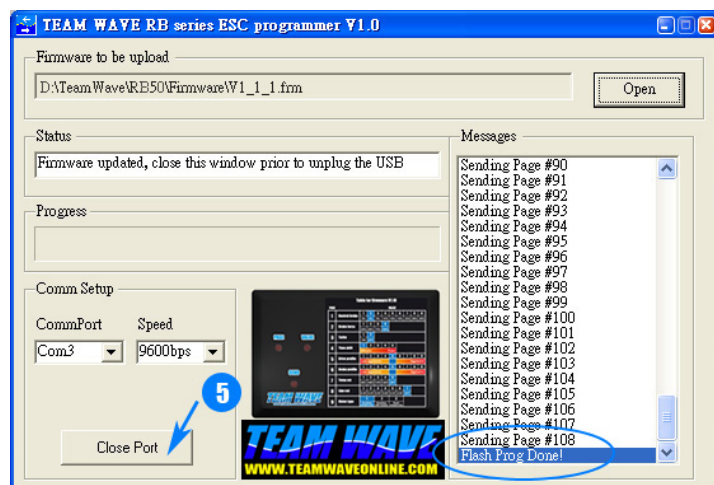


6

Switch off the ESC and disconnect it from the battery. Connect the wires just like profile setup with an additional wire connecting the programmer to the side of the ESC switch. Set the switch on the handheld programmer at "Profile setup". Link up the handheld programmer with a PC using a USB cable (not provided) (USB driver has to be installed before hooking up to the PC). "E r" will be displayed.

4

7



Step 5 : After firmware update as shown above, press "Close Port" and remove the USB cable from the PC

Notes

If "E r" doesn't appear when plugged to the USB and the green LED continuously flashing, try the following steps:

- 1: Connect the extra red wire, connect the programmer to the PC (Do not connect the ESC)
- 2: "E r" should appear now
- 3: Open the application, pick the firmware, select COM port and speed
- 4: Switch to "push to trigger PC transfer" on the programmer
- 5: Hot plug the ESC connector to the programmer
- 6: It should start programming automatically

8